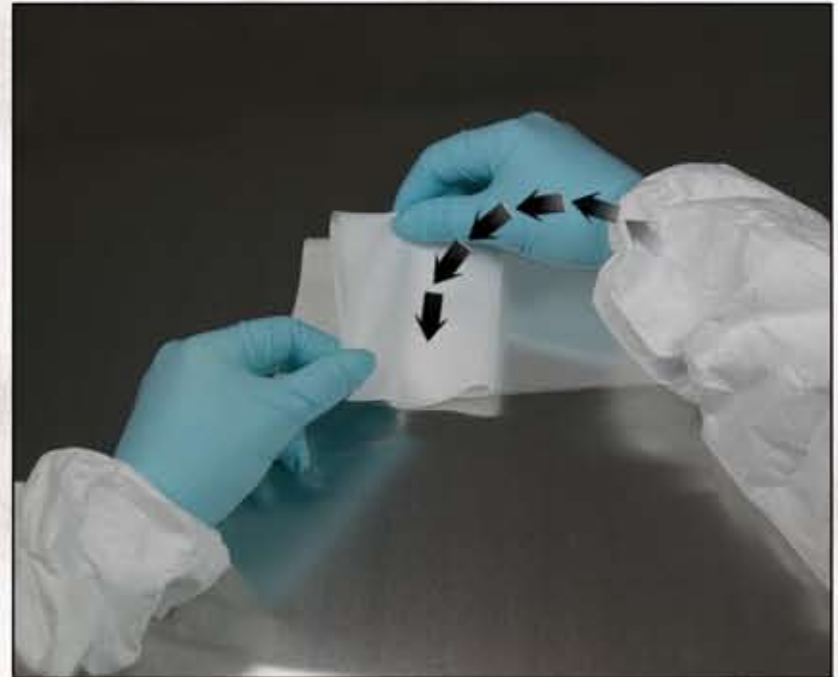


PROPER WIPER FOLDING TECHNIQUE

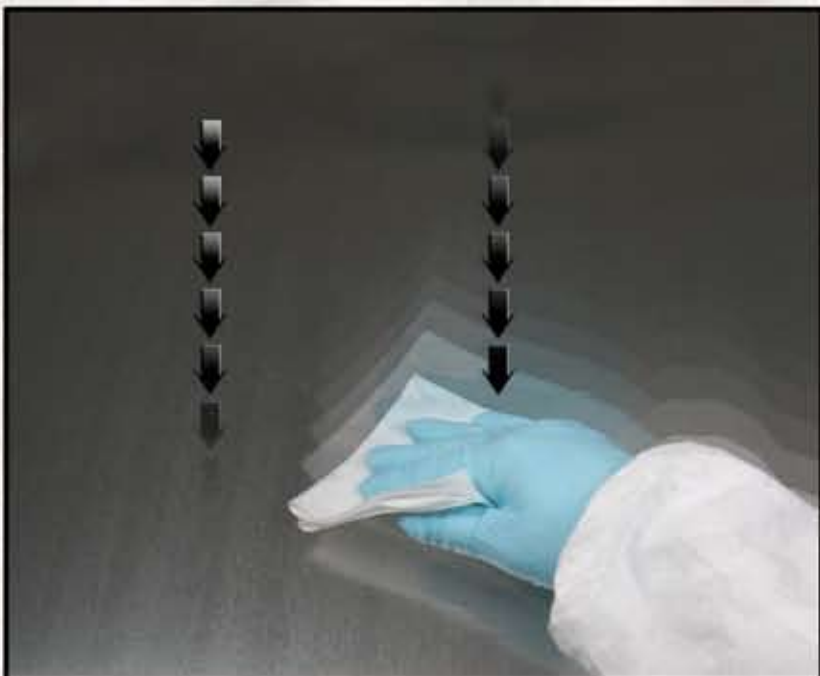
Proper folding of the wiper will maximize efficiency and utilize eight clean wiping strokes.



(1) Place the wiper flat on the surface. Take the two farthest ends from you and bring them towards you, folding the wiper in half.



(2) Fold the wiper in half again, creating four cleaning faces: two outside and two inside.



(3) Work from the cleanest areas to the dirtiest areas in long straight strokes. Each face of the wiper will be used for one stroke. Turn wiper over and make a second stroke.



(4) Refold the wiper as shown in step (2) to enclose the two contaminated faces and expose the two clean faces. Repeat step (3) using the two clean faces.



(5) Wiper may be completely unfolded, reversed, and refolded beginning again at step (1) to enclose the four contaminated faces and expose the four remaining clean faces.

Berkshire
ENGINEERED CLEAN
WWW.BERKSHIRE.COM

Call 1.800.242.7000 for free samples and to arrange for on-site technical consultation.

Pharmaceutical • Biomedical • Semiconductor • Electronic • Life Science • Optics